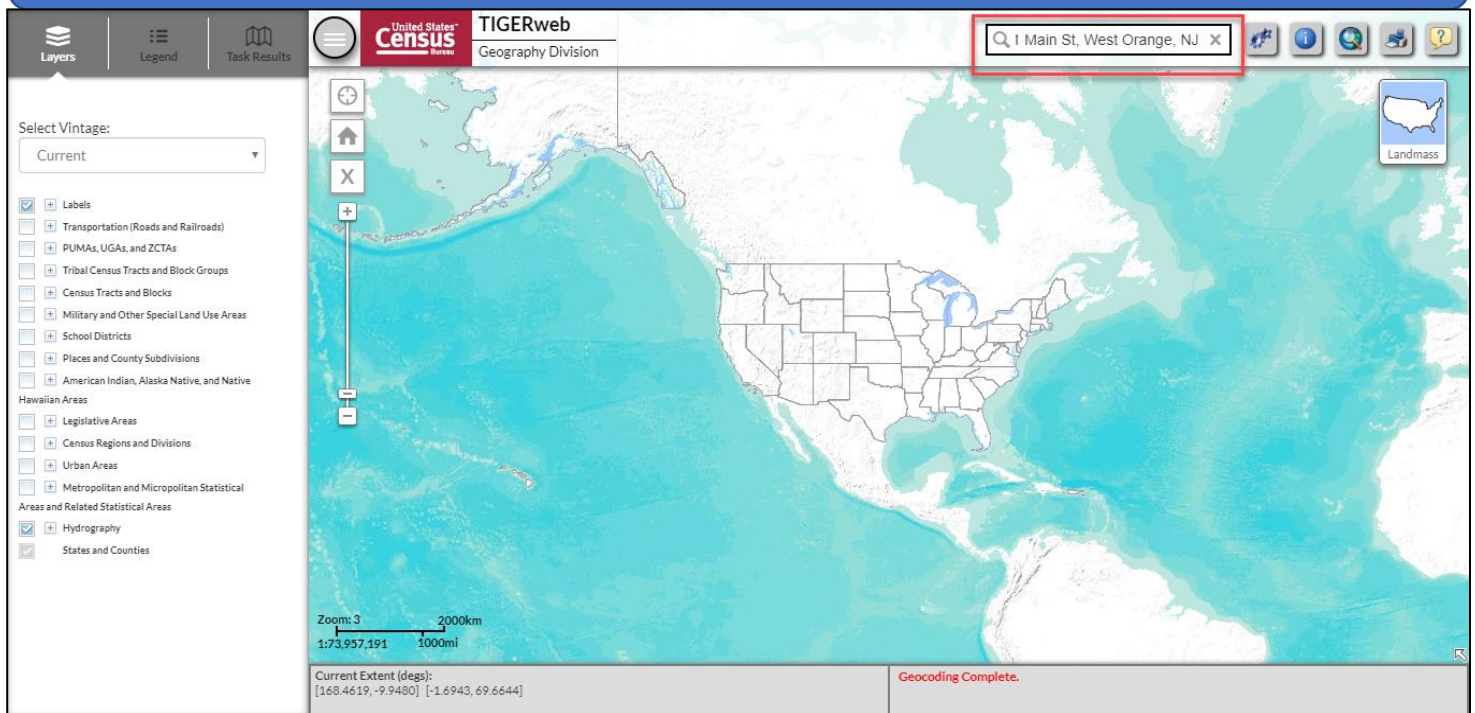


## How can I find geographic information about a particular address using TIGERweb?

Data.census.gov does not have an address search feature. However, you can access geographic information, including boundaries, about a particular address using TIGERweb. Below we provide an example of finding the township and school district names and boundaries for an address using the TIGERweb tool.

The Census Bureau's TIGERweb tool can be accessed at <https://tigerweb.geo.census.gov/tigerweb/>.

**Step 1:** Open TIGERweb. Enter the address in the search bar in the corner and hit enter. Select the address that auto-populates immediately beneath the search bar.



**Step 2:** Click on the Layers button located in the upper left corner of the screen.

The screenshot shows the TIGERweb interface. In the top left corner, the 'Layers' button is highlighted with a red box. The interface includes a search bar at the top right with the text '211 MAIN ST, WEST ORAN'. Below the search bar, there are icons for home, zoom in, zoom out, and a map of the United States. The main map area shows a zoomed-in view of West Orange, NJ, with labels for 'ESSEX' and 'NEW JERSEY'. On the left side, there are three panels: 'Identify Results', 'Query Results', and 'Geocoder Results'. The 'Geocoder Results' panel is active and displays the following information:

- Search Address: 211 Main St, West Orange, NJ
- Matched Address: 211 MAIN ST, WEST ORANGE, NJ, 07052
- Coordinates: Longitude: 74.23448°W, Latitude: 40.78364°N
- Tiger Line ID: 63449536
- Side: R

At the bottom of the map, there is a scale bar showing 'Zoom: 18' and '1:2,257'. The current extent is displayed as 'Current Extent (deg): [-74.2374, 40.7824] [-74.2316, 40.7849]'. A status bar at the bottom right indicates 'Geocoding Complete.'

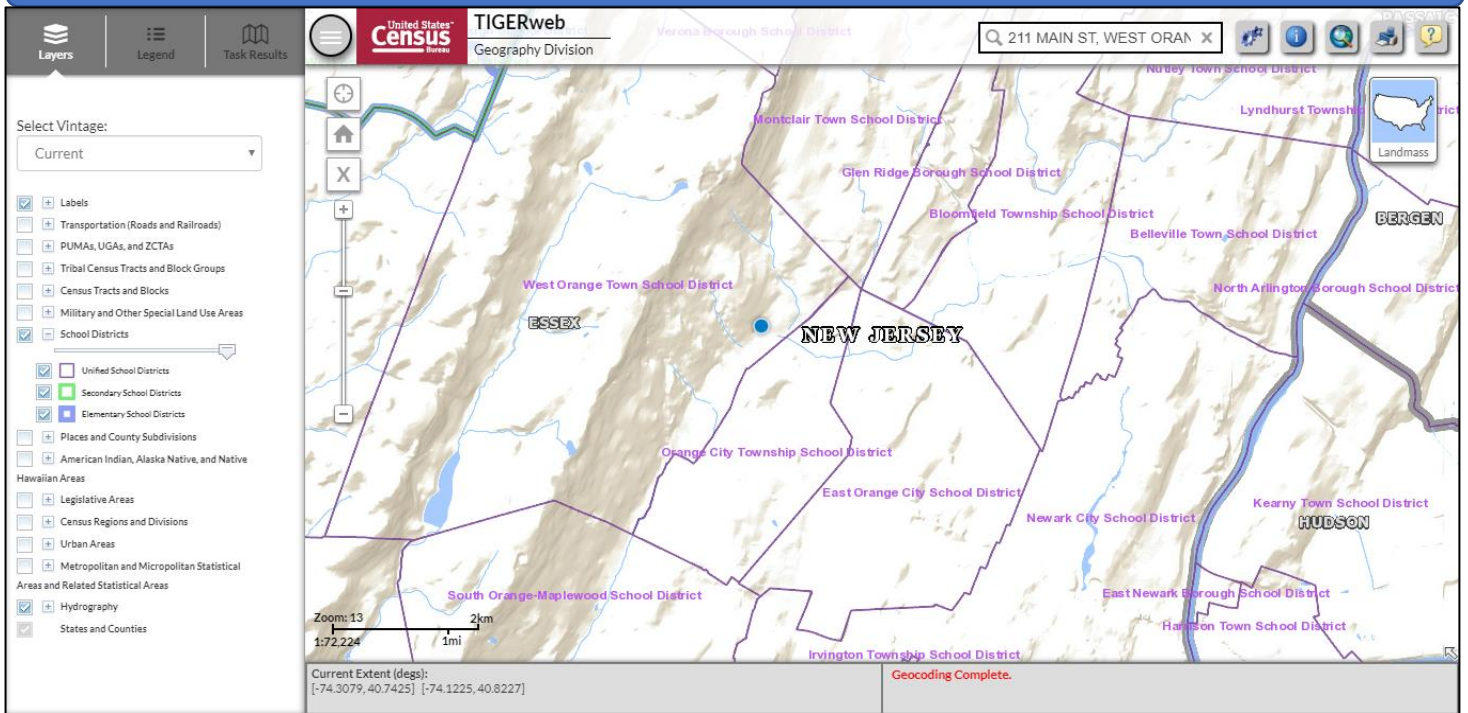
**Step 3:** Here you can add different layers to the map to determine the names and boundaries. Check the box next to School Districts. You can click on the plus sign next to it to adjust the types of school districts that are shown.

The screenshot shows the TIGERweb interface with the 'Layers' panel expanded on the left side. The 'Select Vintage' dropdown is set to 'Current'. The 'Layers' panel lists various map layers, and 'School Districts' is checked. A red box highlights the 'School Districts' section, which includes the following sub-options:

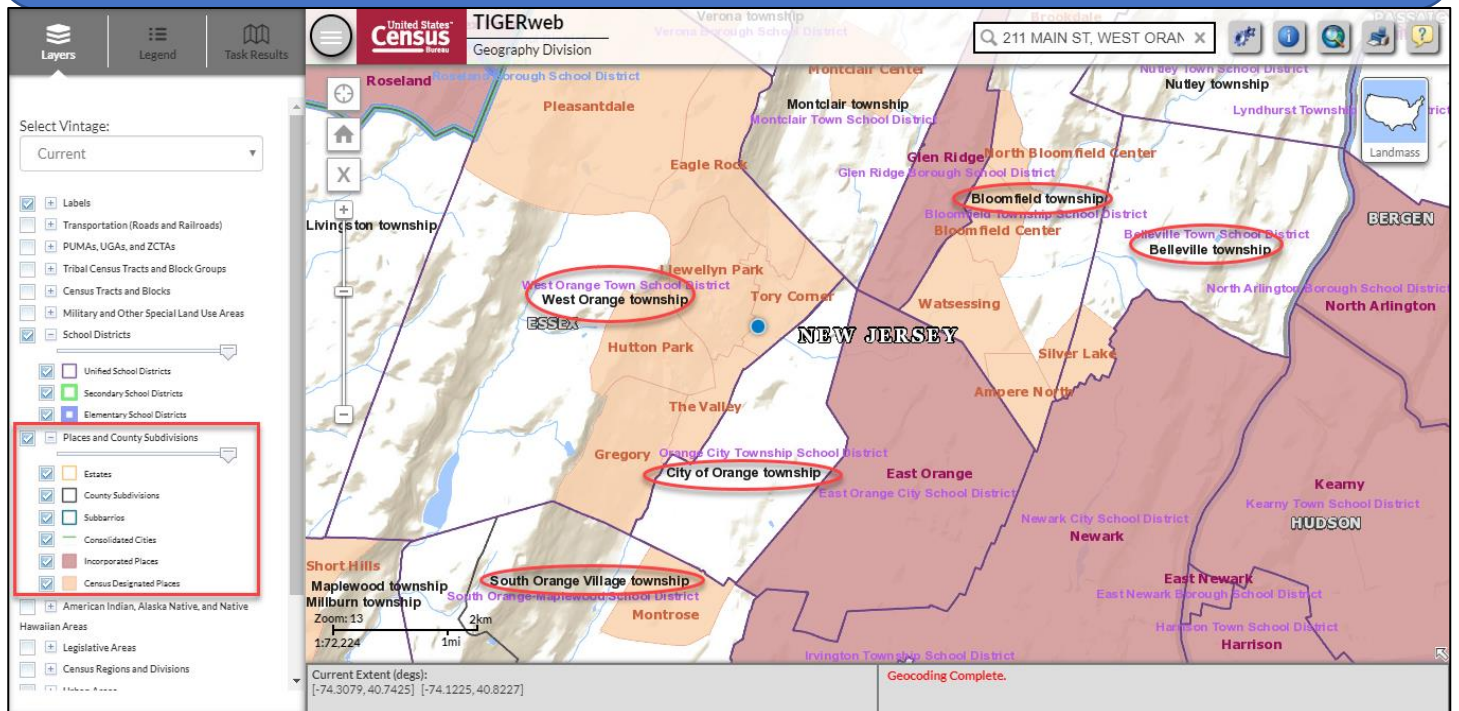
- ☒ Unified School Districts
- ☒ Secondary School Districts
- ☒ Elementary School Districts

The main map area shows a zoomed-in view of West Orange, NJ, with labels for 'West Orange Town School District' and 'ESSEX'. The status bar at the bottom right indicates 'Geocoding Complete.'

## Step 4: Zoom out to view the school district names and boundaries.

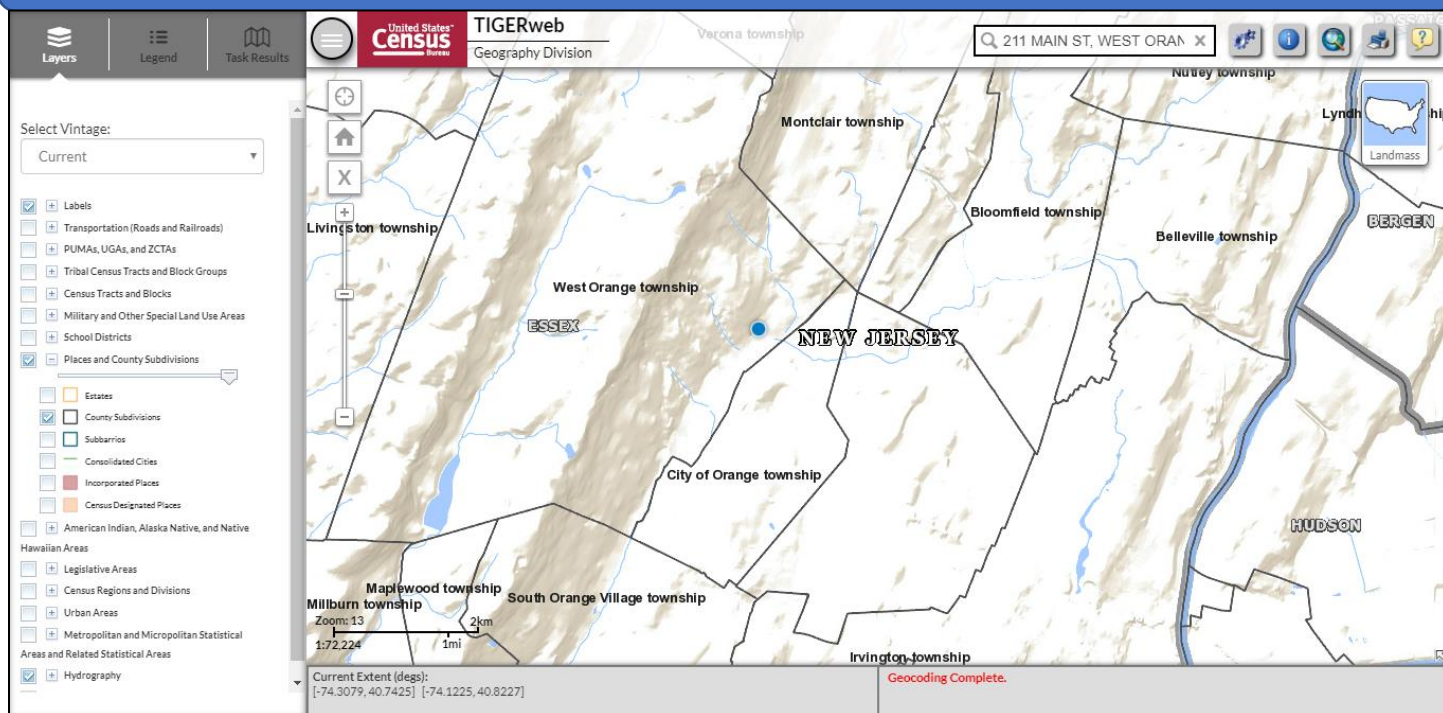


**Step 5:** You can also add other layers to the map. To find the township name, check the box next to Places and County Subdivisions. Click on the plus sign next to it to view the different place and county subdivision boundaries. Note that the township name is shown on the map as long as the County Subdivisions option is checked (the township names are circled in red in the map below).





**Step 6:** To view only the township name, de-select the options that you chose before, leaving only the “County Subdivisions” box checked.



**Additional information can be determined by selecting different layers and zooming in or out of the map.**

Issued May 2020